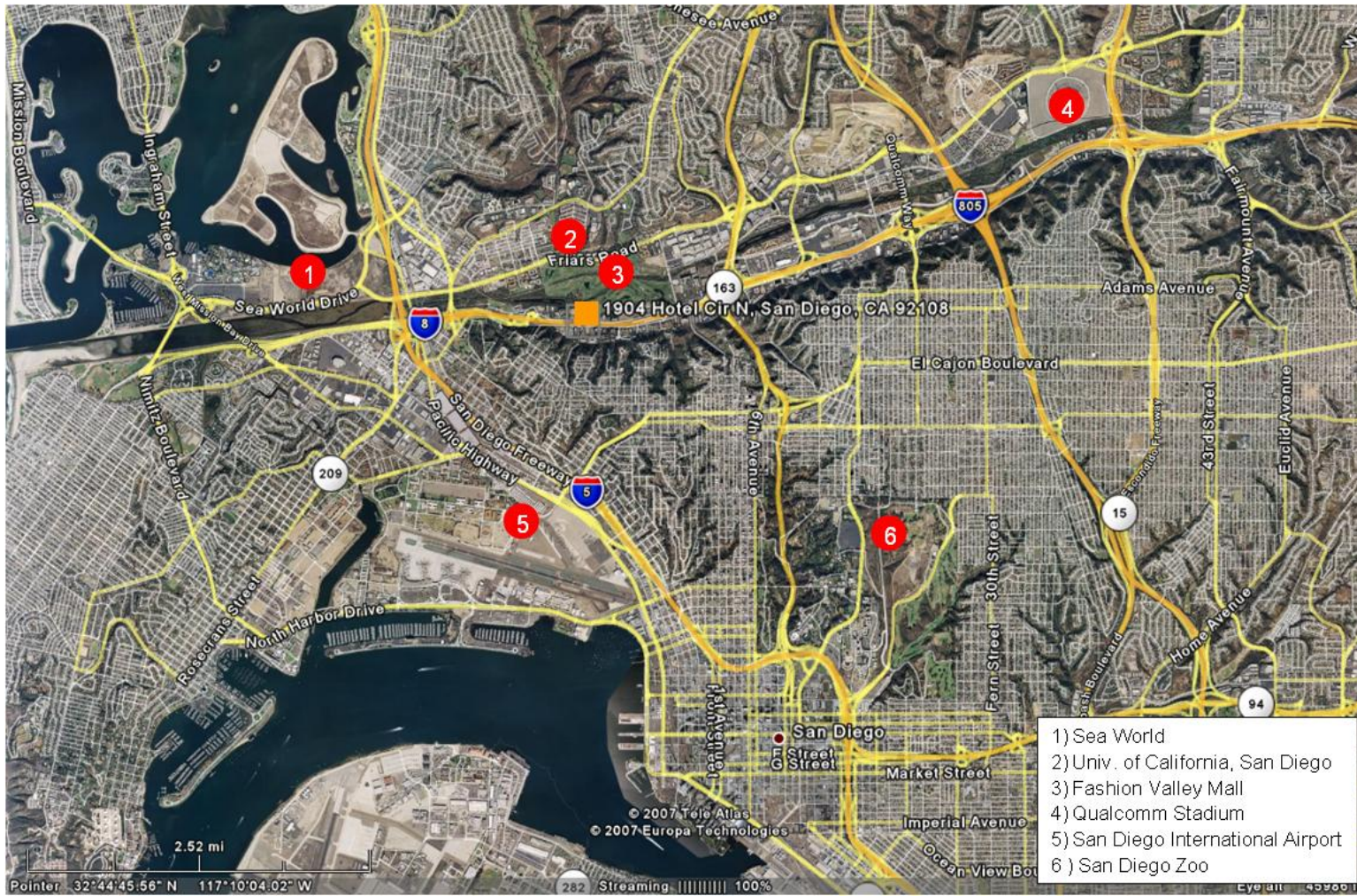




Mission Valley, San Diego, CA Springhill Suites by Marriott

- 169 keys
- 942 sq. ft. meeting space
- New Gen IV Modified Prototype (6-story with 3-story drop-down to maximize views of the San Diego River)

- Premier location in Mission Valley, San Diego on I-8 (Hotel Circle Drive)
- Proximity to downtown San Diego (3.5 miles), I-805 (1 mile), San Diego Airport (5 miles), University of California San Diego (1.3 miles), Qualcomm Stadium (3 miles), Sea World (4.5 miles), Pacific Ocean (5 miles)
- Daily traffic count of 175,000 vehicles per day
- Multiple Fortune 500 companies and headquarters including Samsung, Solar Turbines, Kaiser Permanente, and the United States Navy
- 65.4 million total square feet of office space in local market with 6.2 million sq. ft. located within 5 miles



- 1) Sea World
- 2) Univ. of California, San Diego
- 3) Fashion Valley Mall
- 4) Qualcomm Stadium
- 5) San Diego International Airport
- 6) San Diego Zoo